



Characteristics:

symmetrical quick connection couplings for delivery operations with locking ring

Hose tail:

grooved

Working pressure:

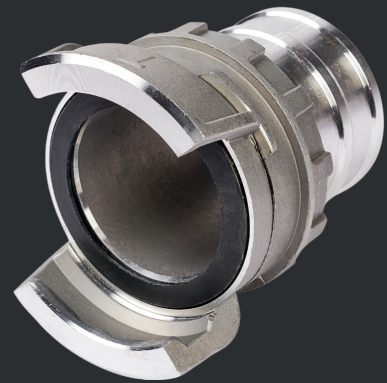
25 bar

Material:

Aluminium, Brass, etc.

**FRENCH COUPLINGS
DSP & AR**

couplings according to NF S 61-701



type	size	lug distance mm	hose inner diameter mm	hose tail mm	weight/pair kg	material	article number
DSP	40	55	45	31	0,180	Aluminium	5595
DSP	65	84	70	44	0,410	Aluminium	5598
AR*	100	123	110	85	1,030	Aluminium	5593

* suitable for suction operations

Characteristics:

asymmetrical quick connection couplings for delivery operations

Hose tail:

multi serrated

Working pressure:

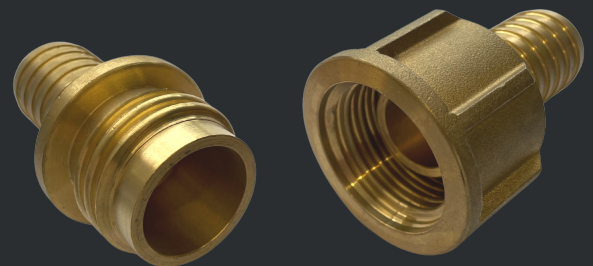
25 bar

Material:

Brass, Aluminium etc.

**FRENCH COUPLINGS
GFR**

couplings according to NF E 29579



type	size	hose inner diameter mm	material	male/ female	article number
GFR	20/25	25	Brass	male	3680
GFR	20/25	25	Brass	female	3681





Characteristics:

symmetrical quick connection couplings for delivery and suction operations with locking ring

Working pressure:

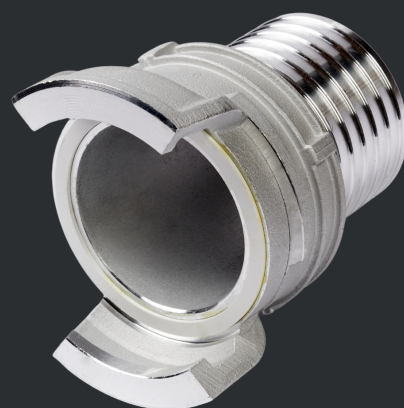
16 bar

Material:

Aluminium, Brass, etc.

**FRENCH COUPLINGS
Guillemin**

couplings according to NF E 29572



type	size	hose inner diameter mm	hose tail	material	article number
Guillemin	20/25	25	serr. tail	Aluminium	3754
Guillemin	40/45	25	serr. tail	Aluminium	3755
Guillemin	65/70	70	serr. tail	Aluminium	3756
Guillemin	100/110	110	serr. tail	Aluminium	3758

type	size	hose inner diameter mm	hose tail	material	article number
Guillemin	20/25	25	serr. tail	Brass	3760
Guillemin	40/45	25	grooved	Brass	7196
Guillemin	65/70	70	grooved	Brass	7197
Guillemin	100/110	110	serr. tail	Brass	3759

