

OEL FAVORIT 100

electro-conductive Special Hose for Mining
acc. to LOBA No. 18.43.21 XII2

Quality made in Germany

Special Hoses



PARSCH

Schläuche • Armaturen



Hose Construction

- Jacket** 100 % polyester high tenacity yarn, circular woven reinforced threads, multiple twisted, twill weave with 3 interwoven copper wire braids
max. change in length 3 %
max. change in diameter 3 %
- Inner Lining** high quality NBR-synthetic rubber in black, electro-conductive, smooth
- External Coating** polyurethane coated, standard colour blue
polyurethane coating increased the abrasion resistance and reduces the water absorption
it requires minimum maintenance and is easy to clean
- Electrical Resistance** < 10⁶ Ohm

Internal diameter		Weight	Burst pressure	Working pressure*	Tensile strength**	Wall thickness
mm	inch	g/m	bar	bar	kg	mm
25	1	160	100	40	2300	2,50
52	2	320	100	40	10000	2,50

* maximum recommended working pressure of the hose, or maximum working pressure of the attached coupling whichever is the lower

** the tensile strength corresponds to half of the value of the theoretical tensile strength at break

PARSCH

*Schläuche • Armaturen
GmbH & Co. KG*

Gildestraße 16
49477 Ibbenbüren/Germany
Telefon: +49 (0) 5451 9 29-0
Fax: +49 (0) 5451 92 92 92

www.parsch.de
info@parsch.de

Quality made by Parsch

OEL FAVORIT 100

electro-conductive Special Hose for Mining
acc. to LOBA No. 18.43.21 XII2



Characteristics

antistatic, electrical resistance $< 10^6 \Omega$
suitable for fire fighting in hazardous areas
suitable for compressed air
very good abrasion resistance and very long service life
oil and fuel resistant
produced with very low twist
low friction loss
kink resistant
ageing and ozone resistant - weather resistant
minimum maintenance and easy to clean
cold resistant to $-30 \text{ }^\circ\text{C}$
heat resistant up to $+80 \text{ }^\circ\text{C}$

Applications

refineries
industry
underground mining

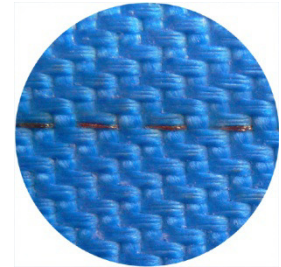
Couplings

System Storz

Important Note: The special inner lining of Oel Favorit 100 allows couplings to be attached without the need to make direct contact with the copper wire braids

Applicable Standards LOBA No. 18.43.21 XII2

Special Hoses



interwoven copper wire braids

Standard lengths

metres
15
20

maximum length up to 60 m

Standard diameter

mm
25
52

other diameter on request
(minimum quantity 500 m)



earthing screw

certified according to
DIN EN ISO 9001 : 2008
Quality Management System

Quality made by Parsch